

absi

Aleutian and Bering Sea Islands Landscape Conservation Cooperative

Atka Shumai

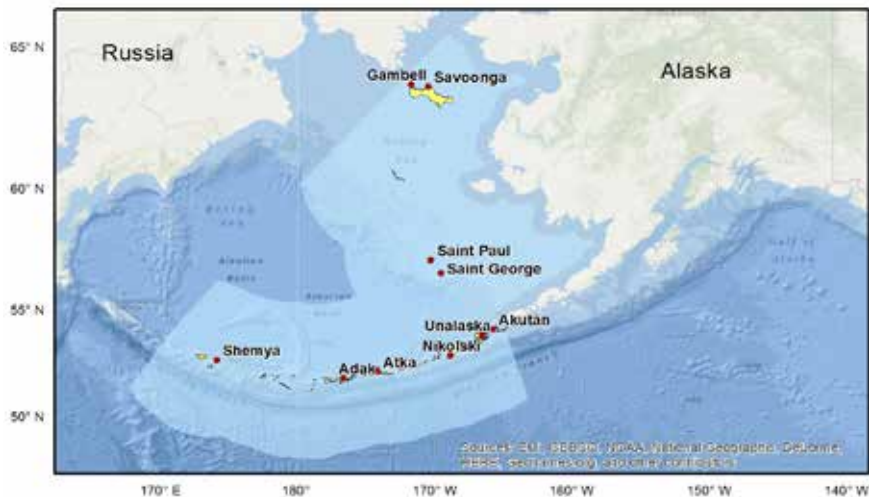
Severten Kurabon Agulka Suvoysham Adak Unalaska Akutan Nakotski

Our Mission

The ABSI LCC promotes coordination, dissemination, and development of applied science to inform conservation of natural and cultural resources in the face of climate change and other landscape-scale stressors.



Our Geographic Region



Our Goals

1. Promote communications to enhance understanding regarding effects of climate change and other landscape-scale stressors in the ABSI region.
2. Support coordination and collaboration among partners to improve efficiencies in their common science and information activities.
3. Identify and support research including data collection, analysis, and sharing that address common information needs of land and resource management decision-makers.
4. Enable synthesis of information at landscape and larger spatial scales.
5. Enhance resource management in the ABSI region through applied science, analytical tools, data management, and information transfer.

Our Steering Committee

Name	Affiliation
Tahzay Jones - Chair	National Park Service
Lauren Divine - Vice Chair	Aleut Community of St. Paul
Carol Fairfield	Bureau of Ocean Energy Management
Shannon Fitzgerald	NOAA
Melissa Good	Alaska Sea Grant
Steven Gray	USGS, Alaska Climate Science Center
Grant Hilderbrand	USGS
Robb Kaler	USFWS
John Olson	NOAA
Tom Rothe	Pacific Birds Habitat Joint Venture
Karen Pletnikoff	Aleutian Pribilof Islands Association
Chris Price	Qawalangin Tribe of Unalaska
Jeff Williams	USFWS

Our Priorities

- Climate Variability and Change
- Marine Vessel Traffic
- Invasive and Introduced Species
- Contaminants and Pollutants

Our Core Staff

Douglas Burn, Coordinator
(907) 786-3807
Douglas_Burn@fws.gov

Aaron Poe, Science Coordinator
(907) 788-3834
Aaron_Poe@fws.gov



absilcc.org

@ABSILCC